



**WATERPROOF EMERGENCY LIGHT**

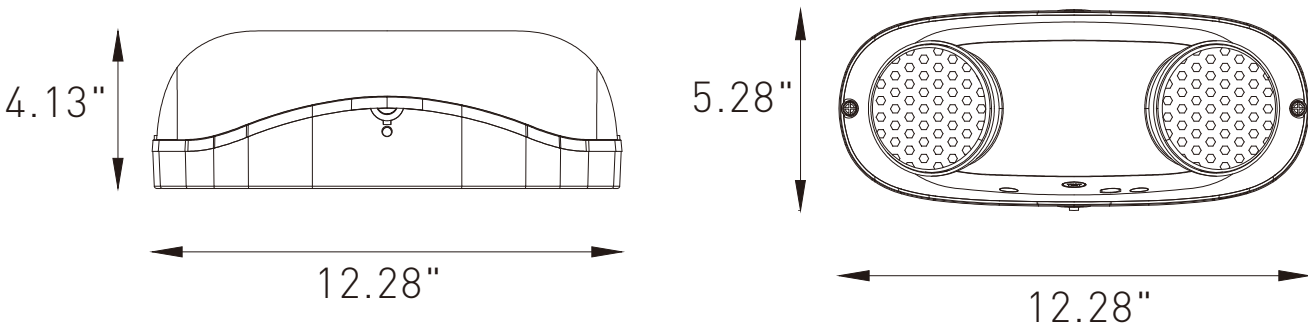
Date: ..... Location: .....  
 Product: ..... Project: .....  
 Quantity: ..... Catalog# .....



► Electric Characteristic

Model NO	Input Wattage	Input Current	Efficiency	Recharge Time	Output Wattage	Light Source	Lead-Acid Battery	Emergency duration	Product Size
LS-WEML012	5W	0.065A	0.94P	24H	2W	Ultra bright LED	3.6V/600mAh	>90mins	11.02"*4.56"*2.67"

► DIMENSION



**IMPORTANT SAFETY GUIDES**

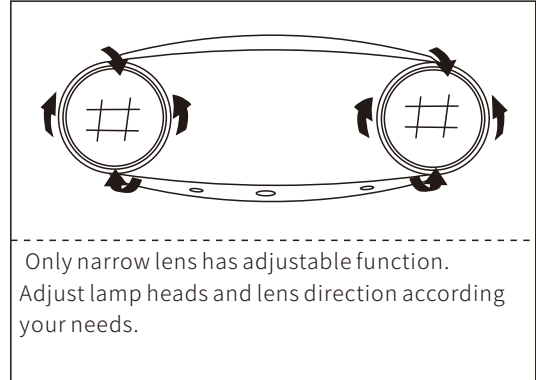
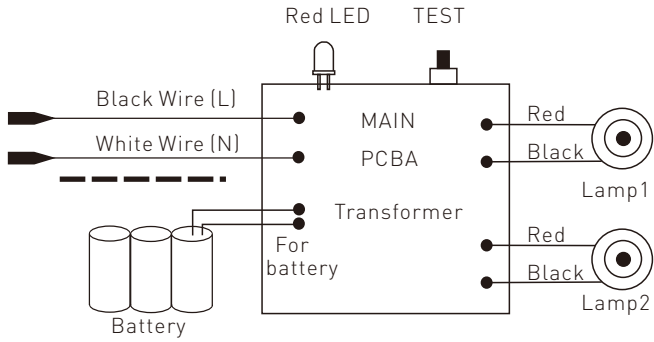
- When using electrical equipment, basic safety precautions should always be followed including the following
- When using electrical equipment, turn off all electrical power before installation.

**READ AND FOLLOW ALL SAFETY INSTRUCTIONS**

- Read and follow all safety instructions.
- Disconnect power before performing work on electrical equipment.
- Suitable for outdoors damp locations.
- Do not let power cords touch hot surfaces.
- Do not install in hazardous locations or near gas or electric heaters.
- The use of equipment not recommended by manufacturer, may cause an unsafe condition and will void the unit's warranty.
- Do not use this equipment for other than its intended purpose.
- Servicing of this equipment should be performed by qualified service personnel.
- Equipment should be mounted in locations and at heights where it will not be subjected to tampered by unauthorized personnel
- Allow battery to be charged for 24 hours before first use.

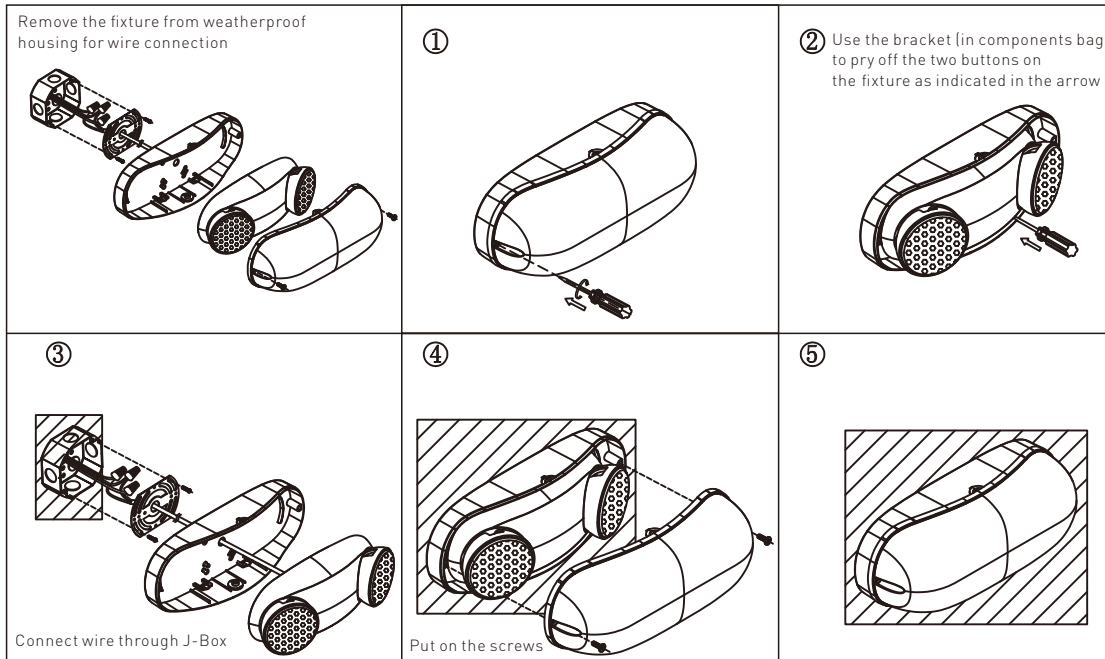
► .WIRING DIAGRAM

► ADJUST LAMP HEADS AND LENS



**INSTALLATION(J-BOX MOUNTING):**

- 1.Remove the fixture from weatherproof housing for wire connection. Fig.1
- 2.Use the bracket (in components bag) to pry off the two buttons on the fixture as indicated in the arrow . fig.2
- 3.Feed fixture leads through main bottom case and connect A power supply.Fig3
4. Align fixture snaps and push it directly into weatherproof bottom case.Then put on the front cover with screws .Fig.4
5. Appy continuous AC power and press "TEST, button to check light.



**WARNING:**

Unused wires must be capped using using enclosed wire nuts.

**INSTALLATION(CONDUIT):**

- 1 Drill a 3/4" hole through the desired conduit entry knock out located on the top or side of frame
- 2 Route AC unswitched circuit of rated voltage into frame.
- 3 All conduit connections must be UL rated for wet locations
- 4 Reference Wall, ceiling or End mount to finalize installation.

**OPERATION:**

- 1 During an electrical power failure,the lamps will automatically turn on for a minimum of 90 minutes.
- 2 To test,depress the "TEST" switch,the emergency lamps will illuminate. When the switch is released the lamps will go off.